



Teaching Nursing Home Collaborative

With *PHENSA*
September 12, 2023



Phase II: The PA Teaching Nursing Home Collaborative (PA TNHC)

The collaborative will be comprised of schools of nursing and nursing homes who have a shared commitment to ***improving the clinical outcomes for nursing home residents, enriching nursing education and supporting the Careforce***

Phase II: Teaching Nursing Home Collaborative Aims

Engage broad stakeholders to build a sustainable infrastructure across Pennsylvania

Improve the residents' quality of care and outcomes within nursing homes

Maximize the engagement of the key partners and leaders from Phase I to scale and expand Revisiting Teaching Nursing Home

Evaluate intervention and broadly disseminate framework, resources, and lessons learned beyond Pennsylvania

Goals for Phase II

Goal to Reach:



400 Nursing Homes



20 BSN +

10 degree = 30 Nursing
Schools



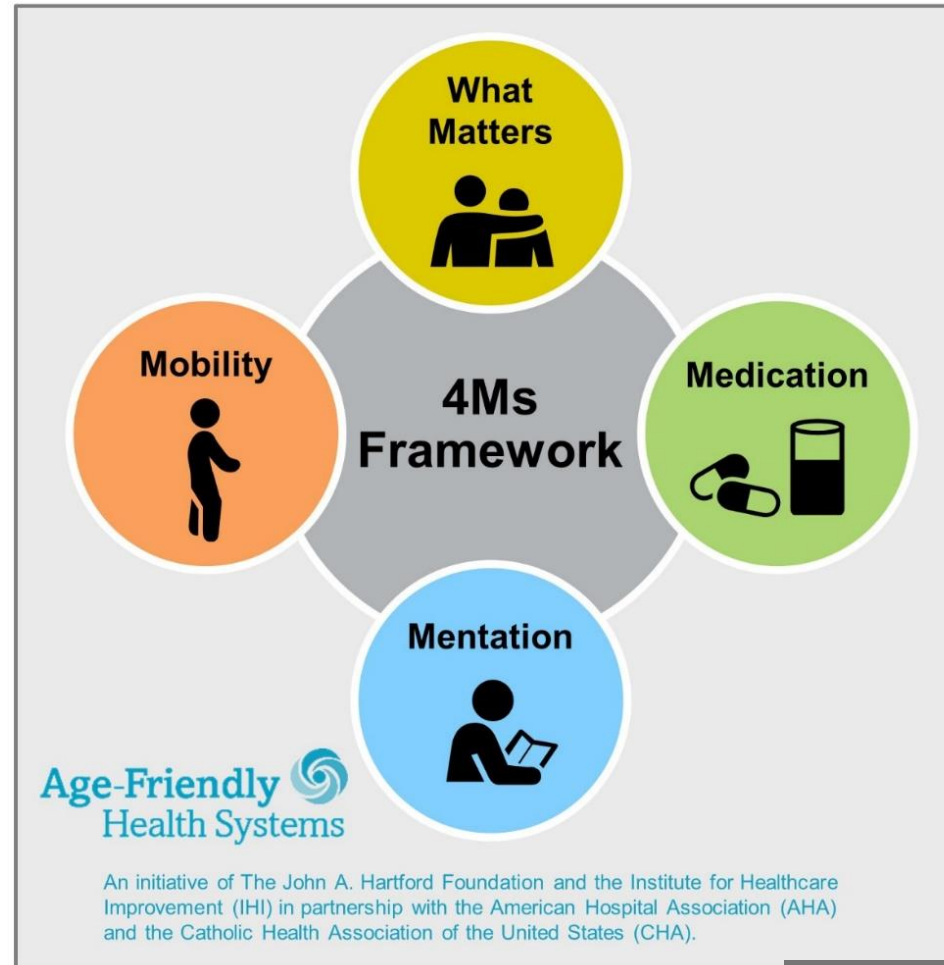
- Academic Practice Partnership with Nursing Homes
- Focus on Geriatric Care
- Utilize Age-Friendly Health Systems

Age-Friendly Health Systems

Age-Friendly Health Systems is an initiative of The John A. Hartford Foundation and the Institute for Healthcare Improvement (IHI), in partnership with the American Hospital Association (AHA) and the Catholic Health Association of the United States (CHA)

Age-Friendly Health Systems aim to:

- Follow an essential set of evidence-based practices;
- Cause no harm; and
- Align with What Matters to the older adult and their family caregivers



What Matters

Know and align care with each older adult's specific health outcome goals and care preferences including, but not limited to, end-of-life care, and across settings of care.

Medication

If medication is necessary, use Age-Friendly medication that does not interfere with What Matters to the older adult, Mobility, or Mentation across settings of care.

Mentation

Prevent, identify, treat, and manage dementia, depression, and delirium across settings of care.

Mobility

Ensure that older adults move safely every day in order to maintain function and do What Matters.

What Does It Mean to Be Age-Friendly?

...Reliably providing a set of four evidence-based elements of high-quality care, known as the “4Ms,” to all older adults

The 4Ms are practiced as a set

What Matters: Know and align care with each older adult’s specific health outcome goals and care preferences including, but not limited to, end-of-life care, and across settings of care

Medication: If medication is necessary, use age friendly medication that does not interfere with What Matters to the older adult, Mobility, or Mentation across settings of care

Mentation: Prevent, identify, treat, and manage delirium across settings of care

Mobility: Ensure that each older adult moves safely every day to maintain function and do What Matters



Making the Case for Participation in the PATNHC

**The Increasing Older Population Touches All Aspects of Healthcare*

School of Nursing Opportunities

- ✓ Prepare students in geriatric care
- ✓ Increase clinical sites for students
- ✓ Build a collaborative to unify SON in geriatric specific care
- ✓ SON Gero specific resources including Age-Friendly Health Systems
- ✓ Path for Innovation- SON voice for the future
- ✓ Develop a professional nursing model in nursing homes

Expert Consultations

Led by: Regional Team, supported by Jewish Healthcare/Health Careers Futures staff

Purpose:

- Share strategies and best practices gleaned over the two years of the RTNH initiative regarding the implementation of Age-Friendly Health Systems and enrichment of academic-practice partnerships

Audience:

- Schools of Nursing and Nursing Homes interested in the PA TNHC and implementing/improving academic-practice partnerships.
- Representatives from other states, community organizations or foundations may attend to learn more about the PA TNHC.
- Registration is open to any organization interested in learning more about the PA TNHC



Getting Involved

No wrong door...

Open Access Website: (patnhc.org)
COMING SOON!

Expert Consultation and Quarterly
Workshop attendance

Mailing List





PA Teaching Nursing Home Collaborative

This site is down for maintenance.
Please check back again soon.

Username

Password

LOG IN

PA Teaching Nursing Home Collaborative - Home (patnhc.org)

Check Back Soon!

Fall Engagement for New Participants

